

Newsletter May 2017



The Association has a web site: - www.hgsafety.co.uk

HSE Web Link <http://www.hse.gov.uk/>

Our Contact Details are as follows:

Office Tel:	01432 343626
Chris Livall	07879 417808
Nick Jones	07789 078779
Adrian Hatton	07767 864466
Louise Evans	07768 713707

Topics

- **Toolbox Talks**
- **Safety Videos**
- **WWT – Free Groundworkers Safety & Health Awareness Event**
- **Common Issues**
- **Picture Gallery – Good and Bad**

Toolboxes – A reminder to all Site Management that toolbox talks are recognized by the HSE as good practice for construction site based training.

Safety Videos – A segment on a series of hard hitting videos created by Crossrail Project which can be used as an example of video toolbox talk.

WWT – the next WWT (Free) event on groundworkers safety and health awareness event being held in Redditch on 16th June 2017.

Common Issues – this month the safety advisors are discussing site inductions, street works and road works and emergency routes & exits on sites.

Picture Gallery – a range of good and bad practice pictures taken from various construction sites

Toolbox Talks

Toolbox talks are an important method of both delivering advice on matters of health and safety and to stimulate discussions, to obtain feedback, and engage with the workforce thus keeping to, maintain, and improve standards.

A toolbox talk is a short preparation to the workforce on a single aspect of health and safety.

They can be in many different formats e.g. verbal, powerpoint, written information or as a video.

No matter how long a person has been doing their job, continued training is essential to remind them of the safety issues daily.

Toolbox talks should take 10-15 minutes to deliver, with frequency of about one per week.

Toolbox talk programmes are widely available enabling you to pick and choose the talks which are relevant to your circumstances.

Safety Videos

Crossrail creates hard-hitting health & safety video resource. Crossrail is encouraging construction firms large and small to make use of a series of videos that have been created for the Crossrail project which focus on some of the health impacts and safety risks faced by construction workers.

The six films use different fictional scenarios to depict realistic situations, which could happen when basic health and safety controls are not followed. Designed for impact and to leave a lasting memory, the films encourage safe and responsible behaviour and while focussing on mental health, exposure to dust, hot works, working at height, working near electricity and machinery, illustrating situations which can be used as part of more general campaigns. The videos include: (click the links to see videos)

Gary's Story: Challenging the stigma attached to discussing mental health.

<https://www.youtube.com/watch?v=MmvZ8I5cfNM>

Jenny's Story: An examination of the behaviours that affect the wearing of dust masks, and the impact that not using protection properly may have on the long term health of workers.

<https://www.youtube.com/watch?v=r-QbfTVMDYU&feature=youtu.be>

John's Story: Showing how experience can lead to a complacent attitude towards site rules.

<https://www.youtube.com/watch?v=32suPRC7Tp8>

Barry's Story: A different approach to how individuals need to take responsibility for their own safety.

<https://www.youtube.com/watch?v=SSHJyKzqPC4>

Zoey's Story: How taking the initiative to get the job done, can lead to serious consequences.

<https://www.youtube.com/watch?v=4pLxzq1-G6w>

Steve's Story: A reflective view on how it can be much more difficult to live with regret than to deal with problems at the time.

<https://www.youtube.com/watch?v=fLfcKi9yG3I>

While the films underline the importance of safety and health during construction and fit-out of the new railway, they are now being made available to construction companies along with associated resources through Crossrail's Learning Legacy Programme – an initiative to share knowledge and best practice from Europe's largest construction project, with the wider UK infrastructure industry.

The new films are among a variety of Health & Safety materials published by Crossrail Limited on the dedicated Crossrail Learning Legacy website, which includes best practice, peer-reviewed case studies and technical papers. Each film is accompanied by discussion notes that will help the viewer understand the risk.

For more information see: <http://learninglegacy.crossrail.co.uk/> Crossrail's Learning Legacy website.

WWT – Free Groundworkers Safety & Health Awareness Event

16th June 2017 8:30 to 13:00pm – Venue Groundforce Training Services – Redditch

The event aims are to raise awareness of the safety risks when penetrating the ground. Whether its simply to better understand ground conditions or why ‘shallow’ or ‘deep’ excavations fail, the event provides the latest advice and guidance.

There will be opportunities to meet experts in the field of groundworks and to seek advice.

Importantly, this event is meant to be interactive, providing attendees with the opportunity to view a series of ‘practical’ sessions with equipment both in and out of the ground on a mock ‘live’ site.

If you dig in the ground, supervise or manage groundworkers, manage a contractor or self-employed then this FREE half day event is for you.

Book form attached to be completed and returned to Belinda.hall@hse.gov.uk

FREE Groundworkers Safety and Health Awareness Event

Order form

Friday 16th June 2017

Places will be allocated on a first come first served basis, so book early to ensure your place. Please complete all details clearly.

I would like _____ place(s)

Name(s) attending _____

Company/Business name _____

Address _____

Postcode _____

Telephone _____

Fax _____

Delegate(s) E-mail(s) _____

Dietary requirements _____

Register your booking using the methods below by 12th June 2017

Tel: 0203 028 1680

Post to:

2nd Floor
Advantage House
Quinton Business Park
19 Ridgeway
Quinton B32 1AL

E-mail: belinda.hall@hse.gov.uk

Please tick size of company:
(number of people)

☐

0-5

☐

6-15

☐

16-50

☐

50+

☐

WWT may retain your details in a computer record for accounting purposes, evaluation of the seminar and to advise you of other seminars and publications which may be of interest to you. If you do not wish to receive further information please tick the box.

☐

WWT may pass basic details of companies attending this event to exhibitors. If you would prefer your contact details not to be passed on, please tick the box.

BOOK NOW!



working well together

Common issues identified on Sites

Chris Livall Senior Safety Advisor

During my recent site inspection I would like to emphasis to all Members the importance of site safety inductions as required under CDM Regulations 2015 Regulation 15 (8) "A suitable site induction".

The site inductions can be a simple Site Rules Document for a small construction site or a detailed site induction for large sites. The following are subjects that should be included in a site induction:

1. Management structure on site
2. First Aid cover on site
3. Emergency procedures including hospital location
4. Welfare Facilities
5. Site Hazards
6. Permit to work system
7. Accident reporting procedure

This list is not exhaustive. The most important part of a site induction is to ensure records are kept.

Nick Jones Safety Advisor

In recent months, during the course of my site visits on a number of occasions I have expressed concern at the unsafe conditions during Street works and road works. The New Roads and Street Works Act (NRSWA) provides legislative framework for this type of work. All work must be carried out in accordance with the Safety at Street Work and Road Works Code of Practice, often referred to as the Red book, which supports the above legislation.

Works include any installation, connection or maintenance of a temporary, new or existing services located within a road or footway. This also includes forming of new or temporary entrances and roads where they join an existing highway. Before any work, site specific Risk Assessments must be carried out and the Code of Practice requirements must be complied with for;

- Signage and lighting
- Working on differing classes of roads
- Methods of traffic control
- Controlling the speed of passing traffic
- Work near level crossings

Road users, whether in a vehicle or on foot must be able to understand exactly what is happening and what is expected of them. Operatives who carry out work on the highway must be competent to do so, particularly anyone involved in laying out the site, positioning signage or lighting.

The Code of Practice can be freely downloaded from the Department for Transports website

Adrian Hatton Safety Advisor

On several occasions during this months site visits I have encountered emergency route/exits with obstructions in place.

CDM Regulations 2015 Regulation 31 clearly states

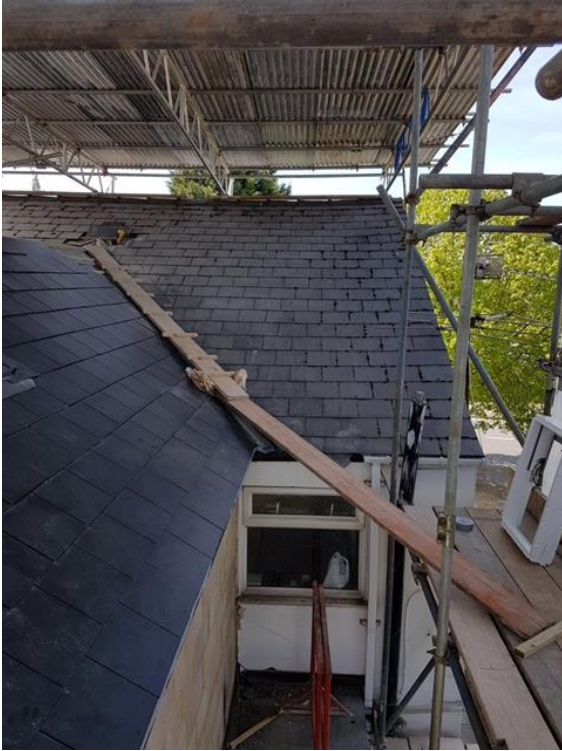
- A sufficient number of suitable emergency routes and exits must be provided to enable a person to reach a place of safety quickly in the event of danger.
- An emergency route or exit must lead as directly as possible to an identified safe area.
- An emergency route or exit and any traffic route giving access to it must be kept clear and free from obstruction.
- Each emergency route or exit must be indicated by suitable signs.



Louise would like to thank Member Companies and individuals from Member Companies for their very generous donations, at present her total is near £2,171.00 On Saturday 27th May she is taking part in 100k Ride the Night Challenge for Women's Cancers cycling from Windsor down through London and back to Windsor cycling through the night.

<https://www.justgiving.com/fundraising/Marielouevans> or cheques made payable to Women V Cancer and on the back of the cheque put Marie-Louise Evans 27th May 2017

Rogues Gallery



Walk the plank!



Safe work at Height?



Not an injury but a red sock poking out of a boot
Time for a new pair



Good practice when securing barriers



What’s wrong? What’s right



Remove the risk of slips & trips from ground level
Trailing leads up out the way



Mind the gap!



Good example of site hoarding