

Newsletter Sept 2017



The Association has a web site: - www.hgsafety.co.uk

HSE Web Link <http://www.hse.gov.uk/>

Our Contact Details are as follows:

Office Tel: 01432 343626
Chris Livall 07879 417808
Nick Jones 07789 078779
Adrian Hatton 07767 864466
Louise Evans 07768 713707

Topics

- HSE set to act on Construction health risks
- Thorough examination of quick hitches
- Enforcement Notices issued by HSE over 1 week period
- Prosecution – Devon Builder fined for fragile roof fall
- SMSTS Refresher Training (Hereford)
- WWT Free Seminar (Worcester)
- HSE – Sector Plan for Health & Safety in Construction – link is <http://www.hse.gov.uk/aboutus/strategiesandplans/sector-plans/construction.htm>
- Picture Gallery

HSE set to act on Construction health risks

Regulator now firmly focused on lung disease and manual handling

The [HSE Priorities](#) for the construction sector during 2017 onwards are heavily biased towards action on [health risks](#). The first of the three priorities is “reducing incidents of ill-health, with a particular focus on occupational lung disease and musculoskeletal disorders”.

HSE will deliver the priority by “directing inspection and enforcement at those failing to manage and control health risks during refurbishment and licenced asbestos removal”.

The regulator will be launching a Construction Health Risks Toolkit (CHeRT) designed to increase contractor awareness of work related ill-health and self-assessing their performance in managing health issues.



HSE Inspectors will:

- **CHeRT** – visit dutyholders to review their health risk management arrangements using leading indicators in toolkit; and
- **HCLG** – work with the Health in Construction Leadership Group in promoting the ownership by industry of good health risk management, and the development of case studies and health-specific leading indicators.

The emphasis on lung disease in construction will be supported by further action on [manual handling risks](#) by working with supply chains to reduce risks from manual handling.

Health in Construction Leadership Group – Dust Video

The shift of emphasis to ‘health’ issues is being led by the industry [Health in Construction Leadership Group](#) (HCLG) which has set itself the mission of:


“uniting the construction industry in order to eradicate the ill-health and disease caused by exposures to health hazards on building sites... and making “construction the leading industry for occupational health and disease prevention by 2025 – the construction 2025 initiative”

The HCLG plan is to achieve a cultural shift within the construction sector so that health is “managed like safety”.

The HCLG website includes a useful [short awareness video](#) on construction dust.

Lets hope further aids for raising awareness and promoting controls will be available in the coming months to support the industry and HSE priorities.



 Safety around dust

Thorough examination of quick hitches

Quick hitches used for lifting fall under the thorough examination requirements of the Lifting Operations and Lifting Equipment Regulations (LOLER), whilst those not used for lifting fall under the inspection requirements of the Provision and Use of Work Equipment Regulations (PUWER).

The periodic examination and/or inspection of quick hitches forms a vital addition to planned preventive maintenance. It provides evidence of the adequacy of a maintenance regime and highlights any deficiencies, leading to improved reliability and safety of the hitch being used.

The requirements for examination and/or inspection vary with the type of hitch. Consequently the type of examination/inspection and the frequency at which it occurs is a decision for the competent person carrying out the examination/inspection.

The nature and extent of both LOLER thorough examinations and PUWER inspections are risk based and since the risks associated with quick hitch failure are similar for lifting and non-lifting duties, good practice require that all quick hitches:

That remain permanently fitted to a machine, are thoroughly examined and/or inspected at the same time.

Suitable for lifting (fitted with a lifting eye), which are regularly removed from the machine (as interchangeable equipment), are subjected to a periodic thorough examination at intervals not exceeding six months.

Enforcement notices issued by HSE

The HSE Notice Register shows 26 construction (over one week period) sector enforcement notices issued by HSE Construction Groups added to the Register.

An increasing number of notices concern wider [CDM2015](#) issues including:

- establishing a fully [trained workforce](#);
- securing effective [site management](#) of key risks;
- [client compliance](#) with project management duties; and
- action by [small builders](#) to ensure basic H&S requirements are being met.

The majority of notices issued concern [work at height](#), [welfare](#), [good order](#), [silica dust](#), and [asbestos](#).

Prosecution – Devon builder fined for fragile roof fall

13 July 2017

A Devon-based construction company has been fined £6,700 after an employee fell more than 5 m through a fragile roof onto a concrete floor.



The roof area where the employee fell through

Taunton Magistrates' Court heard this week that 26-year-old Ryan Sartin was repairing a roof at Home Farm, Shepton Beauchamp in Somerset on 23 June 2016 when the incident happened.

T Broom Construction of Pine Park Road, Honiton, Devon pleaded guilty to breaching reg 4 (1) of the Work at Height Regulations 2005. It was also ordered to pay costs of £1,016.

The Health and Safety Executive (HSE) investigation found that the company had failed to install safety netting to mitigate the consequences of a fall and it did not provide a handrail around the roof edge to prevent anyone from falling.

(IOSH Magazine September 2017)

SMSTS 2 Day Refresher Course running in Hereford – places available

Course title:	Site Managers Safety Training Scheme (SMSTS)
Duration:	Two days
Cost:	£337.00 per person plus VAT This includes tea/coffee and lunch on each day
Training Provider:	Herefordshire & Gloucestershire Construction Safety Association Ltd (Please note external training company is being brought in)
Venue:	Hereford Rowing Club, Greyfriars Avenue Hereford
Dates:	3 rd and 4 th October 2017

TO BOOK PLACES PLEASE CONTACT LOUISE 01432 343626 OR EMAIL safetycsa@btconnect.com –

PLEASE NOTE THAT ALL SMSTS RENEWALS THERE IS NO LONGER A GRACE PERIOD WITH CITB THE COURSE HAS TO BE COMPLETED BEFORE CERIFICATION EXPIRY DATE

H&W WWT Occupational Health and Wellbeing Morning Event 10.10.2017 - Worcester Bank House Hotel

The Herefordshire and Worcestershire Working Well Together group have planned another great event. Further detail about the WWT group and the link to the national campaign events page is available at:

[WWT Events Page](#)

This will be an excellent event on a key industry topic with insightful and excellent presenters. Please find attached the flyer that includes the EventBrite link to book onto. Please could all who plan to attend book on through the same link on the flyer as below:

[Event Brite Booking Registration Link](#)

Sector plan for health and safety: **Construction**

The construction sector ranges from large, high-profile projects to small-scale works by the self-employed. Around 2.2 million people work in the sector, representing around 7% of the GB workforce.

The industry contributes around £97 billion to the economy and is dominated by smaller firms with around 84% having no employees and another 14% having 9 or fewer workers.

Current position

Construction remains a hazardous industry, accounting for almost 30% of all fatal injuries to workers. In the five years to March 2016, 210 construction workers died and many more received life-changing injuries at work.

Performance has improved over the past decade, and the number and rate of fatal incidents, work-related injury and ill health show a general, long-term downward trend. However, the levels of incidents and ill health remain high, with some recent signs of the numbers levelling off.

Developments in the management of health risks have not kept pace with safety improvements.

In 2015/16, 3.7% of the workforce suffered from an illness they believe was caused, or made worse, by their work. The sector has a statistically significantly higher rate of occupational lung disease and musculoskeletal disorders (MSDs) than the average for all industries.

The majority of fatal incidents involve small businesses, and nearly half of all reported injuries occur in refurbishment activities.

Risks on larger projects can be substantial but, generally, large projects are better at controlling risks than most small projects, where there can be a lack of awareness of even basic health and safety standards.

Outcomes and priorities

Construction will continue to be a priority sector for HSE. We want to see a continuation of the downward trends in fatal incidents, work-related

injury and ill health, which will be tackled by achieving the following outcomes:

- Embedding the principles of the Construction (Design and Management) Regulations 2015 (CDM)
- Focusing on a reduction in the cases of occupational lung disease, MSDs and work-related stress
- Supporting small businesses to achieve improved risk management and control



What HSE will do to #HelpGBworkwell

We will secure effective management and control of risk by:

- ensuring the Construction (Design and Management) Regulations (CDM 2015) are understood and a proportionate approach is taken toward compliance by collaborating with construction clients, principal designers and designers and working with other health and safety regulators (eg Office for Nuclear Regulation and Office of Rail and Road) where relevant;
- directing inspection and enforcement at those failing to manage and control risks, focusing on health risks, refurbishment activity, and licensed asbestos removal;
- visiting targeted dutyholders to encourage self-assessment and progressive development of their health risk management arrangements using leading indicators in the Construction Health Risks Toolkit.

We will lead and engage with others to improve workplace health and safety by:

- engaging with the tripartite Construction Industry Advisory Committee (CONIAC) and other stakeholder groups to promote industry ownership of effective health and safety risk management through:
 - case studies;
 - guidance and advice;
 - construction-focused Stress Management Standards;
 - Working Well Together events;
- carrying out insight research to develop interventions which use the right mix of messages, tools, information and incentives that will help small and micro construction businesses comply proportionately with CDM 2015;
- helping to identify and tackle unnecessary business-on-business burdens (blue tape);
- engaging professional bodies to enhance the skills and knowledge of future designers through effective teaching of design risk management across built environment higher education courses;
- demonstrating the effective use of building information modelling to improve the sharing of risk information, coordination and collaboration throughout the design and construction process;
- engaging with supply chains to reduce risks from manual handling and improve the provision of welfare facilities across the sector.

We will reduce the likelihood of low-frequency, high-impact catastrophic incidents by:

- early and strategic interventions with major projects, including HS2, Thames Tideway, and power generation decommissioning and new build;
- developing clear standards of construction risk leadership and leading performance indicators through engagement with stakeholders.

Picture Gallery



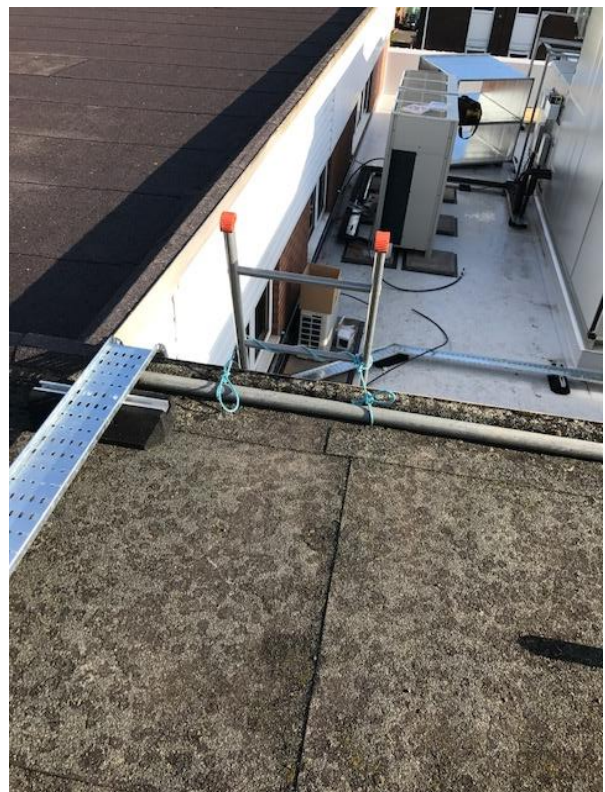
Good example of excavation edge protection



A tidy site is a safe site !!!!



Never an excuse for not shaving on this site



Funny but neither the Work at Height regulations 2005 or NASC guidance TG20 mention this method for securing a ladder ... I wonder why ?